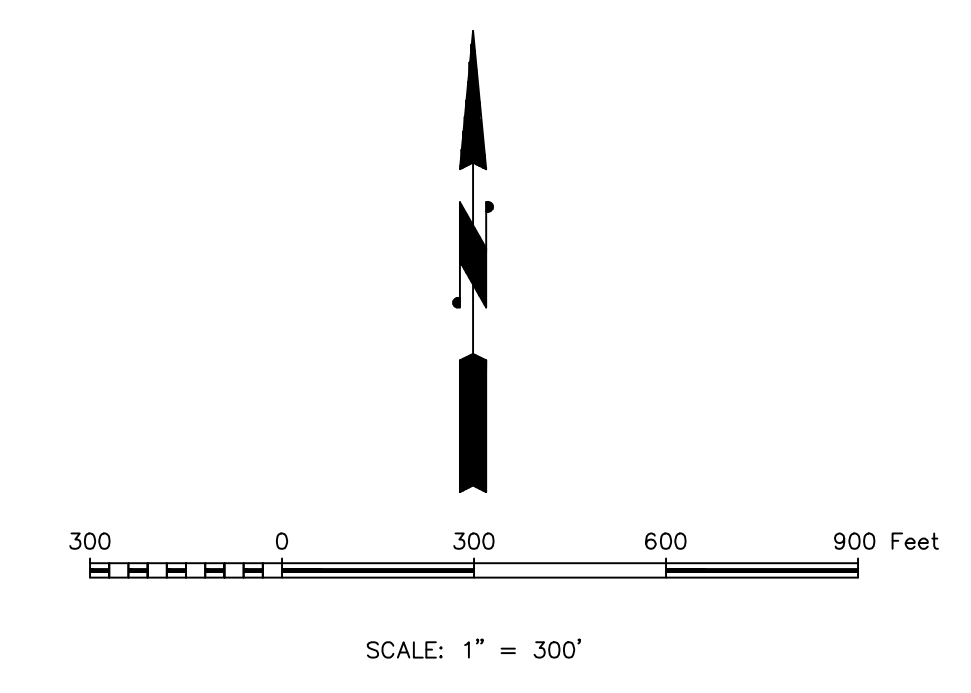
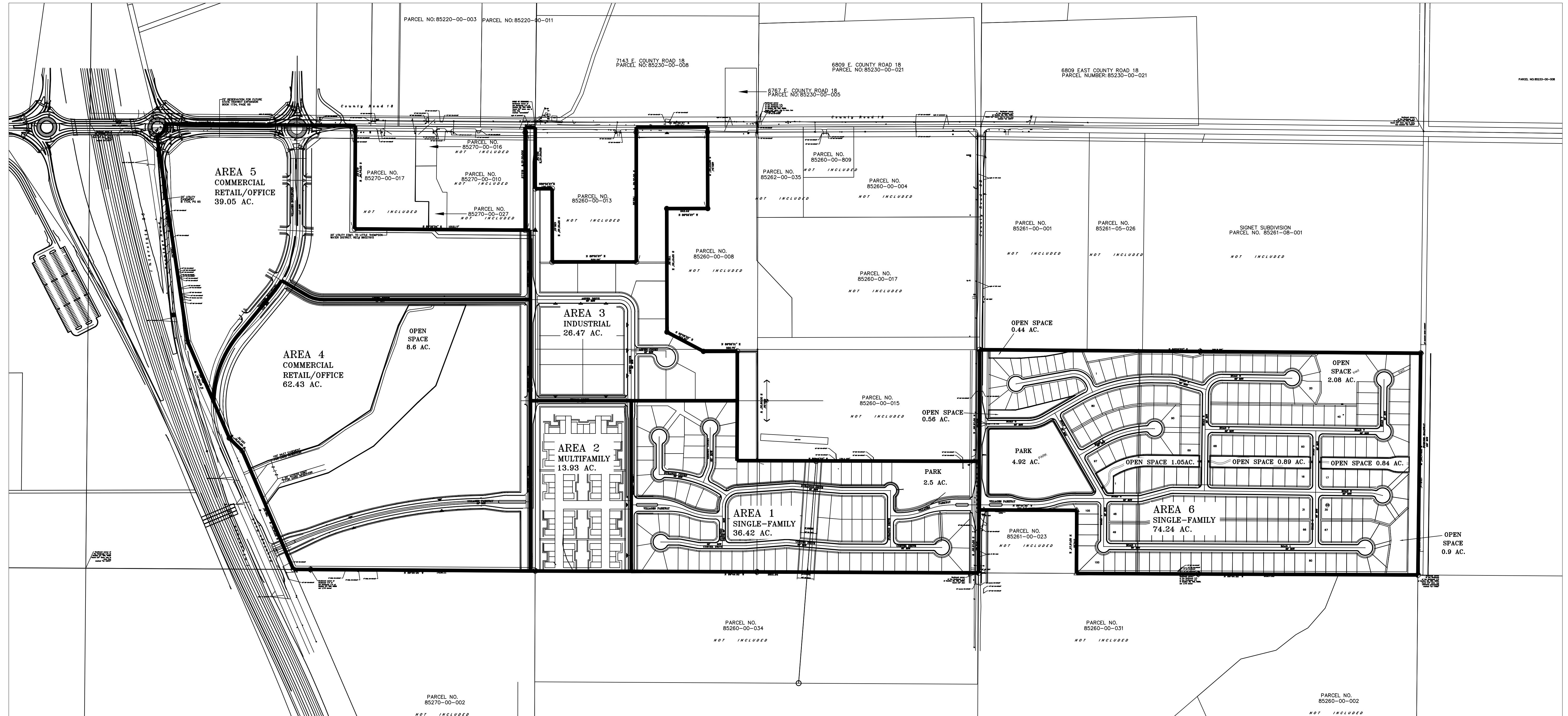


THE VILLAGES AT JOHNSTOWN

METROPOLITAN DISTRICT NOS. 1-6 INCLUSION AREA BOUNDARY MAP

A PORTION OF THE NORTHEAST 1/4 OF SECTION 27 AND A PORTION OF THE NORTH 1/2
OF SECTION 26, TOWNSHIP 05 NORTH, RANGE 68 WEST 6th PRINCIPAL MERIDIAN,
TOWN OF JOHNSTOWN, COUNTY OF LARIMER, STATE OF COLORADO.



DISTRICT MAP
HI **HIGHLINE**
ENGINEERING & SURVEYING
 ENGINEERING CONSULTANTS
 PO BOX 1295
 PARKER, COLORADO 80134
 Tel. No. (303) 889-0044
 Fax. No. (303) 380-3320
 JOB NO. 229PUD

DATE: 12/12/17 SHEET 1 OF 1